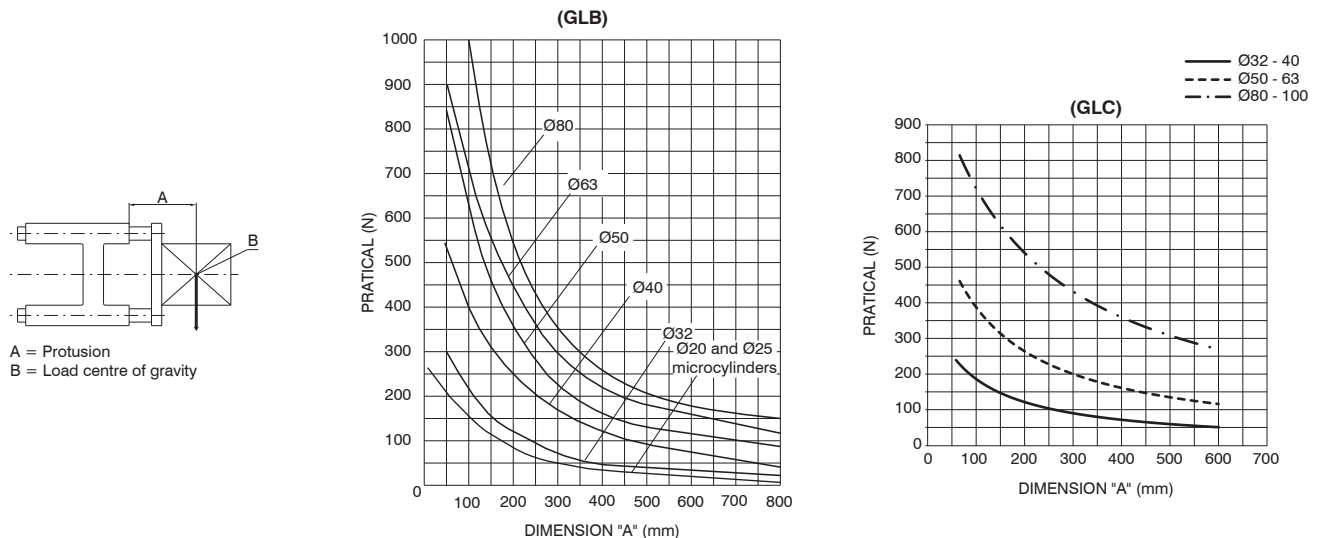


Series 1260 - 1320 Linear guiding units for ISO 6432 microcylinders and ISO 15552 cylinders

Construction characteristics

Body	sintered bronze bushings : anodised aluminium recirculating ball bearings guides : aluminium alloy black painted
Bushings	sintered bronze or recirculating ball bearing guides
Wipers	oil resistant NBR rubber
Guide rods	sintered bronze bushings : C43 chromed steel recirculating ball bearings guides : tempered and chromed steel
Plate	zinc plated steel
Mounting block	zinc plated steel

Loading diagram based on dimension "A"



Use and maintenance

Follow the indication of the above diagram as far as loads are concerned. A large quantity of grease is placed between the two wipers during assembly, therefore the linear control units should not require special maintenance.

Linear guiding units for ISO 6432 microcylinders with sintered bronze rod bushings

Coding: 1260.Ø.stroke.GLB

(Microbore cylinders ISO 6432 must be ordered separately)



Standard strokes

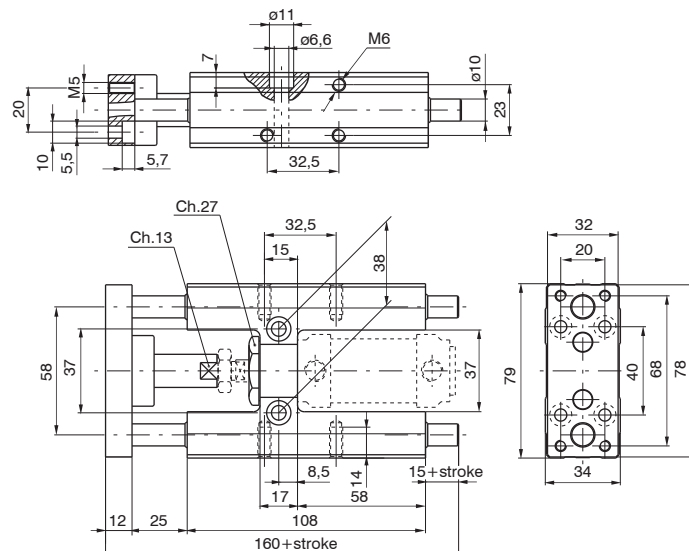
Ø20 100 - 150 - 200 mm

Ø25 100 - 150 - 200 - 250 mm

On request are available strokes up to: 1000 mm

	Weight (g)
stroke 100	970
each 50 mm	60

Sensors and clamps: standard sensors and clamps are used





Linear guiding units

Series 1260 - 1320 Linear guiding units for ISO 6432 microcylinders and ISO 15552 cylinders

Linear guiding units for ISO 15552 cylinders with sintered bronze rod bushings

Coding: 1320.Ø.stroke.GLB

(Cylinders must be ordered separately)



Standard strokes

Ø32 100 - 150 - 200 - 250 - 300 mm

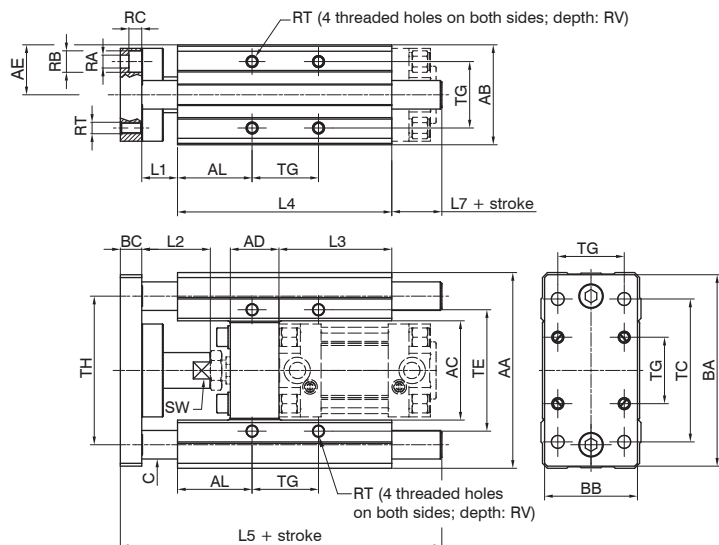
Ø40 100 - 150 - 200 - 250 - 300 - 350 mm

Ø50 100 - 150 - 200 - 250 - 300 - 350 - 400 - 450 mm

Ø63 100 - 150 - 200 - 250 - 300 - 350 - 400 - 450 - 500 mm

Ø80 100 - 150 - 200 - 250 - 300 - 350 - 400 - 450 - 500 - 550 mm

On request are available strokes up to: 2800 mm



Weight (g)					
Bore	32	40	50	63	80
stroke 100	1720	2900	4700	6000	11300
each 50mm	91	159	159	250	380

Sensor clamps and brackets for 1319-1320 series:

Use standard sensors and brackets on the rear and following special brackets on front of cylinders for use sensors codes 1500._ RS._ HS._ which have the following ordering codes:

1320.AGL sensor bracket for cylinders Ø32 and Ø40

1320.BGL sensor bracket for cylinders Ø50 and Ø63

1320.CGL sensor bracket for cylinders Ø80

Linear guiding units for ISO 15552 cylinders with recirculating ball bearings guides

Coding: 1320.Ø.stroke.GLC

(Cylinders must be ordered separately)



Standard strokes

Ø32 100 - 150 - 200 - 250 - 300 mm

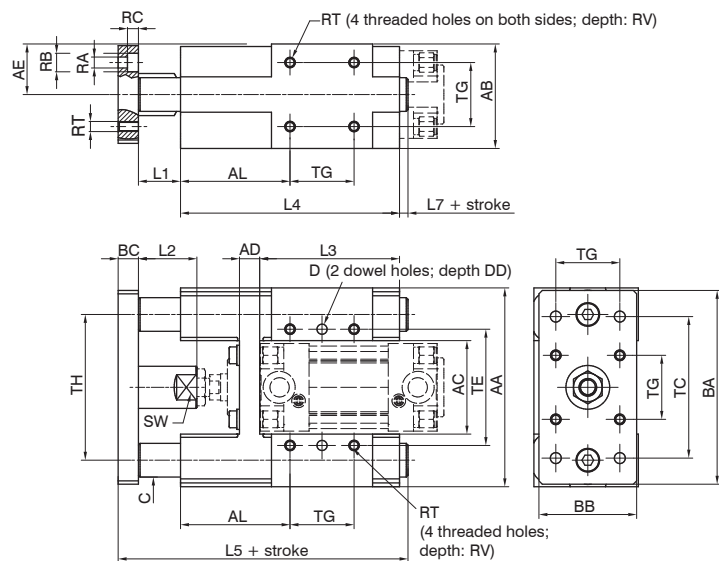
Ø40 100 - 150 - 200 - 250 - 300 - 350 mm

Ø50 100 - 150 - 200 - 250 - 300 - 350 - 400 - 450 mm

Ø63 100 - 150 - 200 - 250 - 300 - 350 - 400 - 450 - 500 mm

Ø80 100 - 150 - 200 - 250 - 300 - 350 - 400 - 450 - 500 - 550 mm

On request are available strokes up to: 2800 mm



Weight (g)					
Bore	32	40	50	63	80
stroke 100	3100	3050	6350	6200	15500
each 50mm	246		385		455

Sensor clamps and brackets for 1319-1320 series:

Use standard sensors and brackets on the rear and following special brackets on front of cylinders for use sensors codes 1500._ RS._ HS._ which have the following ordering codes:

1320.AGL sensor bracket for cylinders Ø32 and Ø40

1320.BGL sensor bracket for cylinders Ø50 and Ø63

1320.CGL sensor bracket for cylinders Ø80

Table of dimensions

	Bore	AA	AB	AE	AC	AD	AL	BA	BB	BC	C	ØD	DD	RA	RB	RC	RT	RV	TE	TC	TG	TH	L1	L2	L3	L4	L5	L7	SW
Bushings (GLB)	32	97	49	28,5	50	24	44,7	93	45	12	12	/	/	6,6	11	6,5	M6	12	61	78	32,5	74	25	39	76	125	187	25	15
	40	115	58	29	57,5	28	48	112	55	12	16			6,6	11	6,5	M6	14	69	84	38	87	25	44	81	140	207	30	15
	50	137	70	35	69,5	34	52,2	134	65	15	20			9	15	9	M8	16	85	100	46,5	104	25	48	79	150	225	35	22
	63	152	85	42,5	84,5	34	55,7	149	80	15	20			9	15	9	M8	16	100	105	56,5	119	25	48	111	182	242	20	22
	80	189	105	52,5	106	34	66	180	100	20	25			11	18	11	M10	20	130	130	72	148	25	53	128	215	302	42	27
Bearings (GLC)	32	118	62	30	51	12	65	115	58	12	20	6	12	6,5	11	6,5	M6	12	69	84	38	84	25	35	83	130	172	5	20
	40	118	62	30	55,5	12	65	115	58	12	20	6	12	6,5	11	6,5	M6	12	69	84	38	86,5	25	35	83	130	172	5	20
	50	155	85,5	42,5	70	16	80	153	80	15	25	6	12	9	15	9	M8	16	100	112	56,5	112	25	35	106,5	165	210	5	24
	63	155	85,5	42,5	78	16	80	153	80	15	25	6	12	9	15	9	M8	16	100	112	56,5	116	25	35	106,5	165	210	5	24
	80-100	214	131	66,5	122	39,5	115	213	130	15	30	8	13	11	17	10,5	M10	15	176	176	86	168	20	55	160,5	260	300	5	24